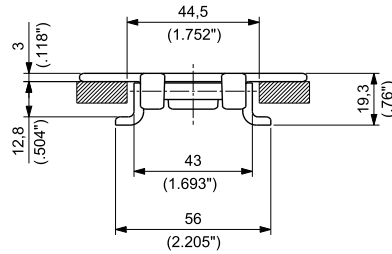
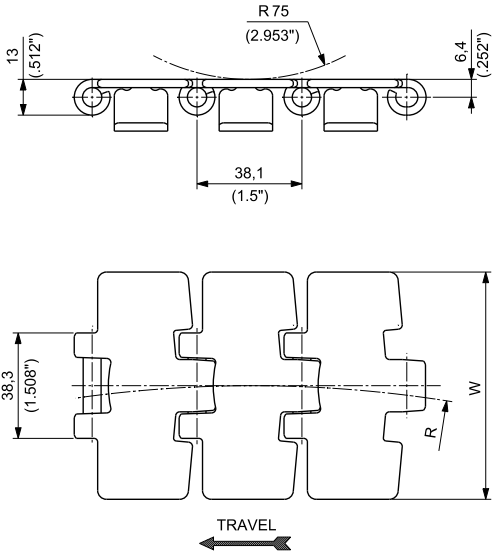


**TAB**  
**REDUCED PLATE GAP**  
**PITCH 1 ½" (38,1 mm)**  
**THICKNESS 3 mm (0.118")**  
**HINGE 43 mm (1.693")**



Materials  
see page 14



Sprockets  
see pages 135÷140



Corner tracks  
see page 342



Applications  
see page 22

MATERIALS		ITEM DESCRIPTION	PART NUMBER	WIDTH W		SURFACE FINISH Ra	POLISHED HINGES	SIDEFLEXING RADIUS		YIELD LOAD AVERAGE		WEIGHT	
Plate	Pin			mm	inch			mm R	inch R	N	lbs	kg/m	lbs/ft
<b>PRIMA</b> <b>P</b>	AUSTENITIC STAINLESS STEEL	P 981T K 3 ¼	P981TKD/000	82,6	3.25	0,3	NO	457,2	18	8000	1,798	2,97	2.00
		P 981T K 83,8	P981TKRA/000	83,8	3.30	0,3	NO	457,2	18	8000	1,798	2,99	2.01
		P 981T K 4 ½	P981TKG/000	114,3	4.50	0,3	NO	609,6	24	8000	1,798	3,61	2.43
		P 981T K 7 ½	P981TKL/000	190,5	7.50	0,3	NO	609,6	24	8000	1,798	5,05	3.40



Standard packaging:  
Rolls of 3,048 m (10 feet)