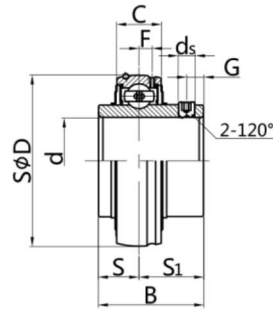


FJ-UC2



Bearing NO.	Dimensions (mm / in.)									Dynamic load ratings(N)	Static load ratings(N)	Weight (kg)
	d	D	B	C	S	S1	G	ds	F			
FJ-UC204	20	47	31.0	17.0	12.7	18.3	4.8	M6x1	4.3	12800	6600	0.16
204-12	3/4	1.8504	1.2205	0.6693	0.500	0.720	0.189	1/4-28UNF	0.169			0.16
FJ-UC205	25	52	34.1	17.0	14.3	19.8	5.0	M6x1	4.3	14000	7850	0.19
205-13	13/16	2.0472	1.3425	0.6693	0.563	0.780	0.197	1/4-28UNF	0.169			0.23
205-14	7/8											0.22
205-15	15/16											0.20
205-16	1											0.19
FJ-UC206	30	62	38.1	19.0	15.9	22.2	5.0	M6x1	5.2	19450	11250	0.30
206-17	1-1/16	2.4409	1.5000	0.7480	0.626	0.874	0.197	1/4-28UNF	0.205			0.31
206-18	1-1/8											0.32
206-19	1-3/16											0.30
206-20	1-1/4											0.29
FJ-UC207	35	72	42.9	20.0	17.5	25.4	7.0	M8x1	5.7	25700	15200	0.45
207-20	1-1/4	2.8346	1.6890	0.7874	0.689	1.000	0.276	5/16-24UNF	0.224			0.51
207-21	1-5/16											0.48
207-22	1-3/8											0.45
207-23	1-7/16											0.42
FJ-UC208	40	80	49.2	21.0	19.0	30.2	8.0	M8x1	6.2	29500	18100	0.60
208-24	1-1/2	3.1496	1.9370	0.8268	0.748	1.189	0.315	5/16-24UNF	0.244			0.64
208-25	1-9/16											0.61
FJ-UC209	45	85	49.2	22.0	19.0	30.2	8.0	M8x1	6.6	32700	20900	0.65
209-26	1-5/8	3.3465	1.9370	0.8661	0.748	1.189	0.315	5/16-24UNF	0.26			0.75
209-27	1-11/16											0.71
209-28	1-3/4											0.67
FJ-UC210	50	90	51.6	24.0	19.0	32.6	10.0	M10x1	6.5	35000	23200	0.75
210-29	1-13/16	3.5433	2.0315	0.9449	0.748	1.283	0.394	3/8-24UNF	0.256			0.87
210-30	1-7/8											0.82
210-31	1-15/16											0.77
210-32	2											0.73
FJ-UC211	55	100	55.6	25.0	22.2	33.4	10.0	M10x1	7.1	43300	29200	0.99
211-32	2	3.9370	2.1890	0.9843	0.874	1.315	0.394	3/8-24UNF	0.28			1.14
211-33	2-1/16											1.08
211-34	2-1/8											1.07
211-35	2-3/16											0.97
FJ-UC212	60	110	65.1	27.0	25.4	39.7	10.0	M10x1	7.9	47700	32800	1.32
212-36	2-1/4	4.3307	2.5630	1.0630	1.000	1.563	0.394	3/8-24UNF	0.311			1.52
212-37	2-5/16											1.44
212-38	2-3/8											1.37
212-39	2-7/16											1.30
FJ-UC213	65	120	65.1	28.0	25.4	39.7	10.0	M10x1	8.0	57200	40000	1.70
213-40	2-1/2	4.3307	2.5630	1.1024	1.000	1.563	0.394	3/8-24UF	0.315			1.79
213-41	2-9/16											1.70
FJ-UC214	70	125	74.6	29.0	30.2	44.4	12.0	M12x1.5	8.3	62100	44800	1.94
214-42	2-5/8	4.9213	2.9370	1.1417	1.189	1.748	0.472	7/16-20UNF	0.327			2.15
214-43	2-11/16											2.05
214-44	2-3/4											1.95
FJ-UC215	75	130	77.8	30.0	33.3	44.5	12.0	M12x1.5	8.6	66200	49300	2.16
215-45	2-13/16	5.1181	3.0630	1.1811	1.311	1.752	0.472	7/16-20UNF	0.339			2.16
215-46	2-7/8											2.41
215-47	2-15/16											2.30
215-48	3											2.10

FK FJ-UC2-- Series Precision Bearing Inserts