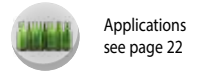
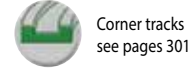
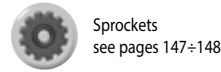
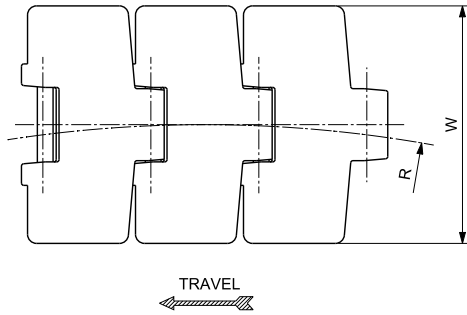
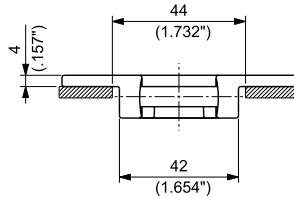
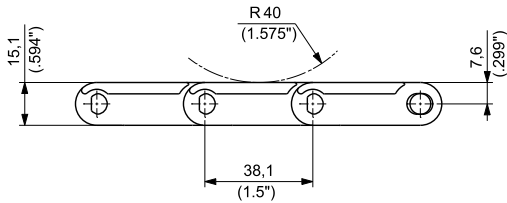


**MAGNETIC**  
**REDUCED PLATE GAP**  
**PITCH 1 ½" (38,1 mm)**  
**THICKNESS 4 mm (0.157")**  
**HINGE 42 mm (1.654")**



| MATERIALS   |                             | ITEM DESCRIPTION   | PART NUMBER      | WIDTH W |      | PLATE THICKNESS |      | SIDEFLEXING RADIUS |        | WORKING LOAD (25°C/77°F) |     | WEIGHT |        |
|---|-----------------------------|--------------------|------------------|---------|------|-----------------|------|--------------------|--------|--------------------------|-----|--------|--------|
| Plate   | Pin                         |                    |                  | mm      | inch | mm              | inch | mm                 | R inch | N                        | lbs | kg/m   | lbs/ft |
| ULTRA PERFORMANCE<br>HOMOPOLYMER DELRIN®<br><b>UP</b>                       | MAGNETIC<br>STAINLESS STEEL | UP 880M RG K 3 ¼   | UP880MRGKD/000   | 82,6    | 3.25 | 4,0             | 0.16 | 500,0              | 19.69  | 2000                     | 450 | 0,98   | 0.66   |
|   |                             | UP 880M RG K 83,8  | UP880MRGKRA/000  | 83,8    | 3.30 | 4,0             | 0.16 | 500,0              | 19.69  | 2000                     | 450 | 0,99   | 0.67   |
|   |                             | UP 880M RG K 4 ½   | UP880MRGKG/000   | 114,3   | 4.50 | 4,0             | 0.16 | 500,0              | 19.69  | 2000                     | 450 | 1,12   | 0.75   |
| SPECIAL DELRIN®<br>REINFORCED WITH KEVLAR®<br><b>DK2</b>                    | MAGNETIC<br>STAINLESS STEEL | D2K 880M RG K 3 ¼  | D2K880MRGKD/000  | 82,6    | 3.25 | 4,0             | 0.16 | 500,0              | 19.69  | 2000                     | 450 | 0,97   | 0.65   |
|   |                             | D2K 880M RG K 83,8 | D2K880MRGKRA/000 | 83,8    | 3.30 | 4,0             | 0.16 | 500,0              | 19.69  | 2000                     | 450 | 0,98   | 0.66   |
|   |                             | D2K 880M RG K 4 ½  | D2K880MRGKG/000  | 114,3   | 4.50 | 4,0             | 0.16 | 500,0              | 19.69  | 2000                     | 450 | 1,12   | 0.75   |
| <b>NEW</b><br>ECOLOGICAL FRICTION<br>ABATING THERMOPLASTIC<br><b>E-FAST</b> | MAGNETIC<br>STAINLESS STEEL | EF 880M RG K 3 ¼   | EF880MRGKD/000   | 82,6    | 3.25 | 4,0             | 0.16 | 500,0              | 19.69  | 2000                     | 450 | 0,97   | 0.65   |
|   |                             | EF 880M RG K 83,8  | EF880MRGKRA/000  | 83,8    | 3.30 | 4,0             | 0.16 | 500,0              | 19.69  | 2000                     | 450 | 0,98   | 0.66   |
|   |                             | EF 880M RG K 4 ½   | EF880MRGKG/000   | 114,3   | 4.50 | 4,0             | 0.16 | 500,0              | 19.69  | 2000                     | 450 | 1,12   | 0.75   |
| ABRASION RESISTANT<br>POLYAMIDE <sup>(1)</sup><br><b>AR</b>                 | MAGNETIC<br>STAINLESS STEEL | AR 880M RG K 4 ½   | AR880MRGKG/000   | 114,3   | 4.50 | 4,0             | 0.16 | 500,0              | 19.69  | 2000                     | 450 | 1,08   | 0.73   |

<sup>(1)</sup> ACTUAL WIDTH CAN BE UP TO 0,5% GREATER THAN NOMINAL WIDTH

